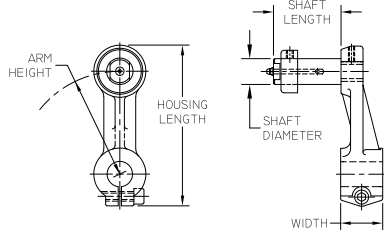


Continued from previous page.

Universal Drive Tensioner



Features:

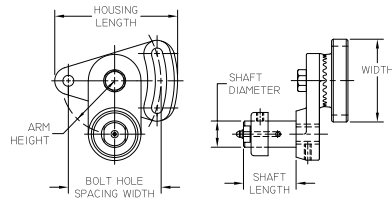
- Can be located at any point on a shaft
- Full 360° controlled tensioning
- Split arm base and locking screw permit tight clamping
- Can be used in pairs as snubbers for head and tail pulleys

Shaft Mounted Tensioner

Shaft Dia. (in)	Shaft Type	Stud Hole	Shaft Length (in)	Arm Height (in)	Housing Length (in)	Item No.	Mfr. No.	Net Price
1/2	GS-SO1	3/8-16	1 1/2	0.50	3.280	110511479	GS-AS	\$16.49
1	GS-NO2	1-14	1 1/2	0.88	6.250	110511481	GS-AM-3/4-10	32.46
	GS-NO3		2 1/2					
	GS-NO4		3 1/2					
1 1/2	GS-SO2	3/4-16	2 1/8	0.88	6.250	110511480	GS-AM	32.46
	GS-SO3		3 1/8					
	GS-SO4		4 1/8					
1 1/2	GS-SO5	1-14	4	1.31	9.380	110511482	GS-AL	58.05
	GS-SO6		6					

Features:

- Rotating arm
- Adjusting slot
- Full 360° controlled tensioning
- Serrated teeth to prevent slippage
- Two-bolt base for easy mounting



Swivel Flange Mounted Tensioner

Shaft Dia. (in)	Shaft Type	Stud Hole	Shaft Length (in)	Arm Height (in)	Housing Length (in)	Bolt Hole Spacing Width (in)	Item No.	Mfr. No.	Net Price
1/2	GS-SO1	3/8-16	1 1/2	1.19	2.720	2.00	110511489	GS-SS	\$24.19
1	GS-SO2	3/4-16	2 1/8	1.88	4.630	3.50	110511490	GS-SM	41.85
	GS-SO3		3 1/8						
	GS-SO4		4 1/8						
1 1/2	GS-SO5	1-14	4	2.78	6.940	5.25	110511491	GS-SL	86.66

Martin MPC Plain Bored Synchronous Sprocket



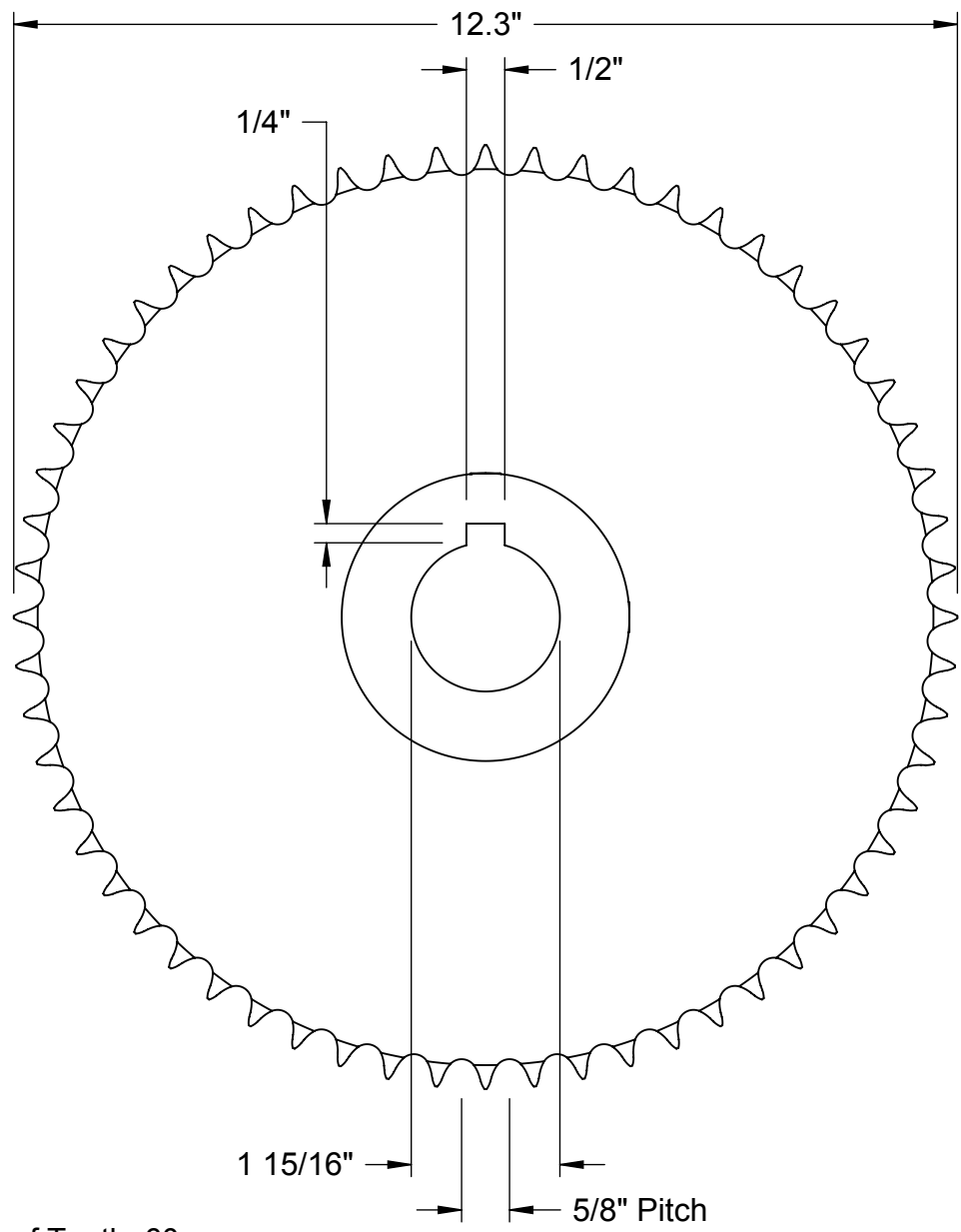
Belt Pitch: 8 mm

Belt Width (mm)	Min. Bore (in)	Max. Bore (in)	No. Teeth	O.D. (in)	Item No.	Mfr. No.	Net Price
12	1/2	1.188	22	2.143	110933008	PB8MX22S12	\$97.73
		1.500	25	2.443	110701268	PB8MX25S12	82.16
		1.750	28	2.744	110933016	PB8MX28S12	81.97
		1.813	30	2.945	110933020	PB8MX30S12	85.48
		2.000	32	3.145	104514378	PB8MX32S12	89.36
21	1/2	1.188	22	2.143	110933009	PB8MX22S21	115.50
		1.500	25	2.443	110790388	PB8MX25S21	115.50
		1.750	28	2.744	110933017	PB8MX28S21	119.35
		1.813	30	2.945	110933021	PB8MX30S21	119.35
		2.000	32	3.145	110933024	PB8MX32S21	123.21
36	1/2	1.188	22	2.143	110933010	PB8MX22S36	123.21
		1.500	25	2.443	110933014	PB8MX25S36	130.31
		1.750	28	2.744	110933018	PB8MX28S36	145.62
		1.813	30	2.945	110933022	PB8MX30S36	148.77
		2.000	32	3.145	110933025	PB8MX32S36	152.57
		2.125	34	3.346	110933027	PB8MX34S36	152.57
		2.313	36	3.546	110933029	PB8MX36S36	156.38
		2.438	38	3.747	110933031	PB8MX38S36	156.38

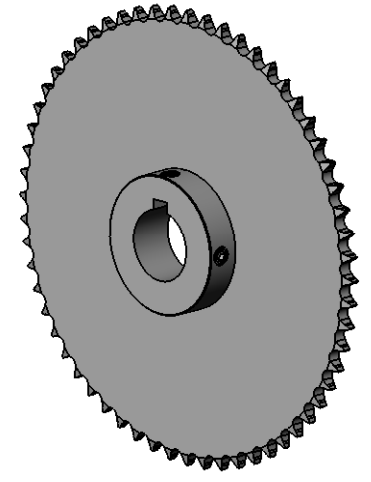
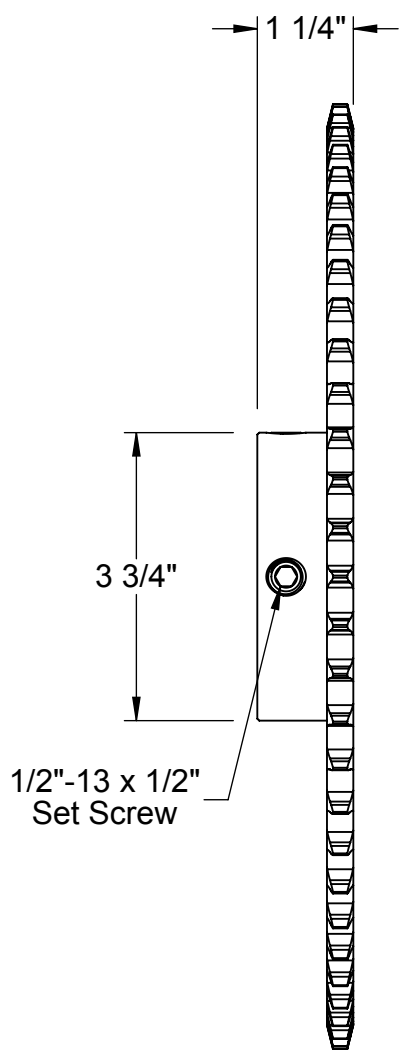
Belt Width (mm)	Min. Bore (in)	Max. Bore (in)	No. Teeth	O.D. (in)	Item No.	Mfr. No.	Net Price
62	1	1.188	22	2.143	110933011	PB8MX22S62	\$141.28
		1.500	25	2.443	110933015	PB8MX25S62	141.81
		1.750	28	2.744	110933019	PB8MX28S62	145.62
		1.813	30	2.945	110785800	PB8MX30S62	160.22
		2.000	32	3.145	110933026	PB8MX32S62	164.03
		2.125	34	3.346	110933028	PB8MX34S62	174.66
		2.313	36	3.546	110933030	PB8MX36S62	182.27
		2.438	38	3.747	110933032	PB8MX38S62	185.19
		2.563	40	3.947	111520902	PB8MX40S62	192.74
		2.750	42	4.148	110933033	PB8MX42S62	201.18
			45	4.448	110933034	PB8MX45S62	219.19

Continued on next page.





Number of Teeth: 60



McMASTER-CARR CAD

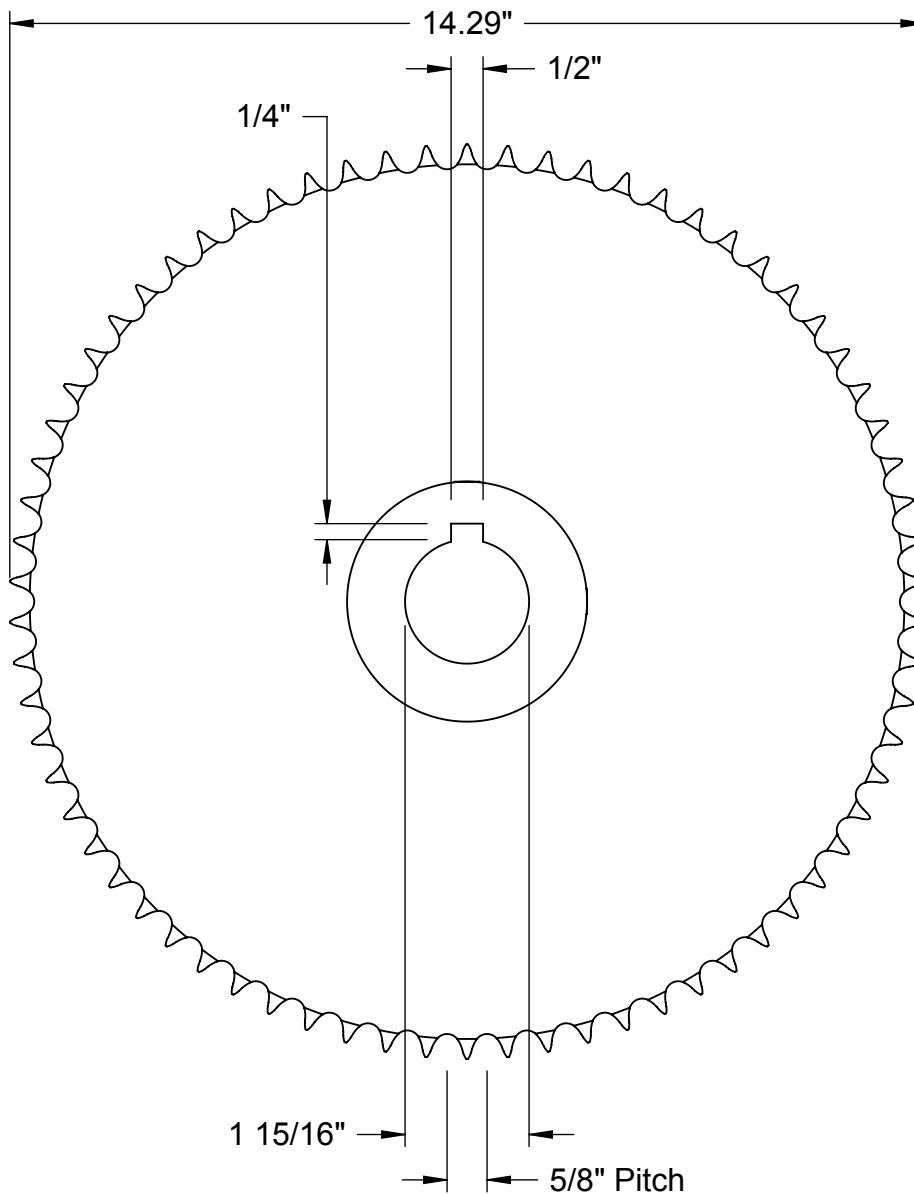
<http://www.mcmaster.com>

© 2014 McMaster-Carr Supply Company

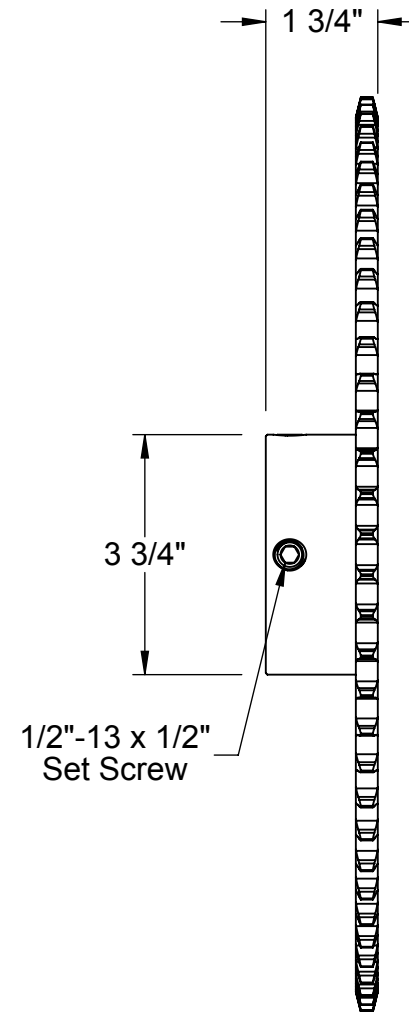
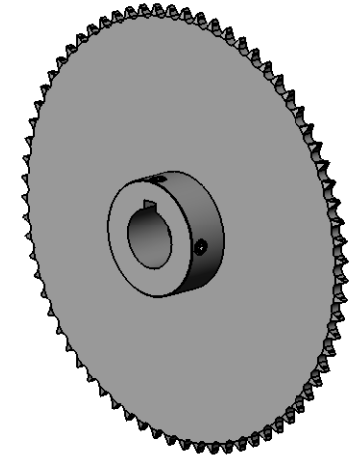
Information in this drawing is provided for reference only.

PART NUMBER **6236K47**

Finished-Bore Sprocket for ANSI #50 Roller Chain



Number of Teeth: 70



McMASTER-CARR CAD

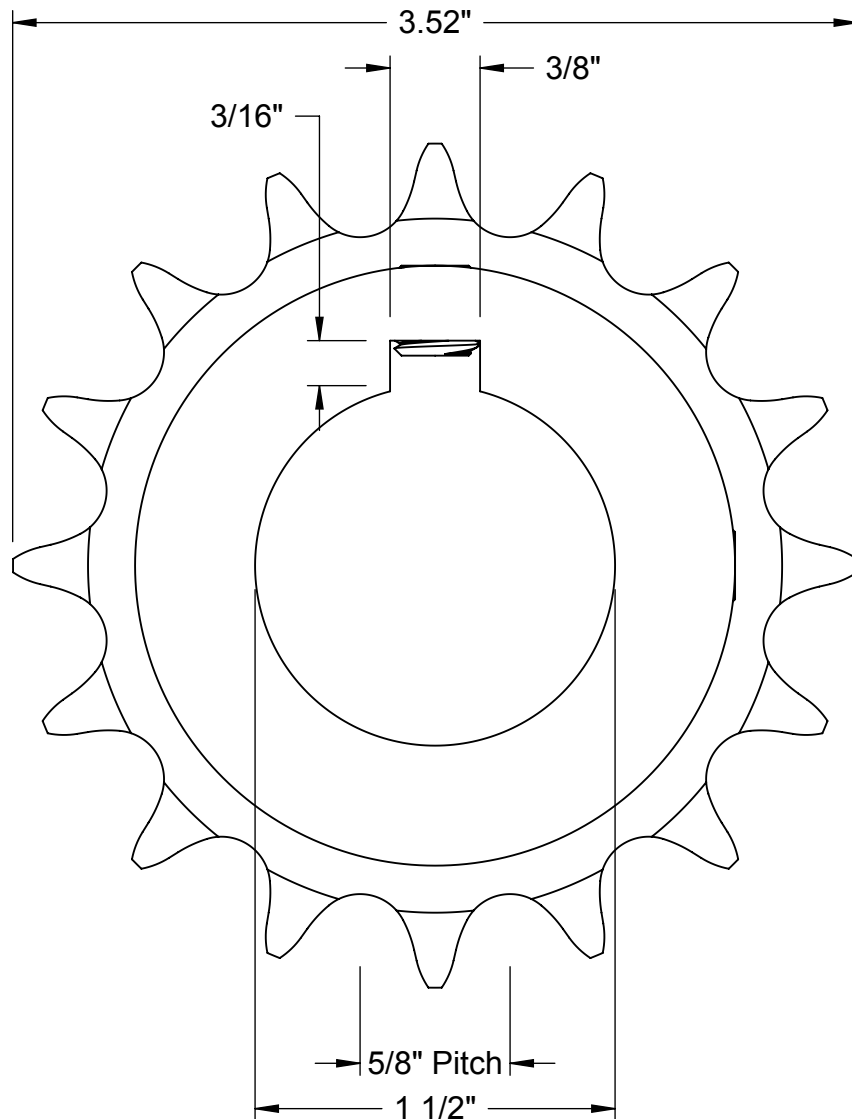
PART
NUMBER

2741T3

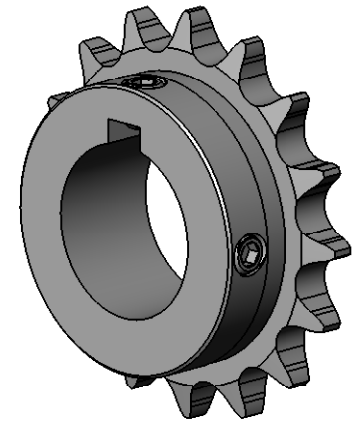
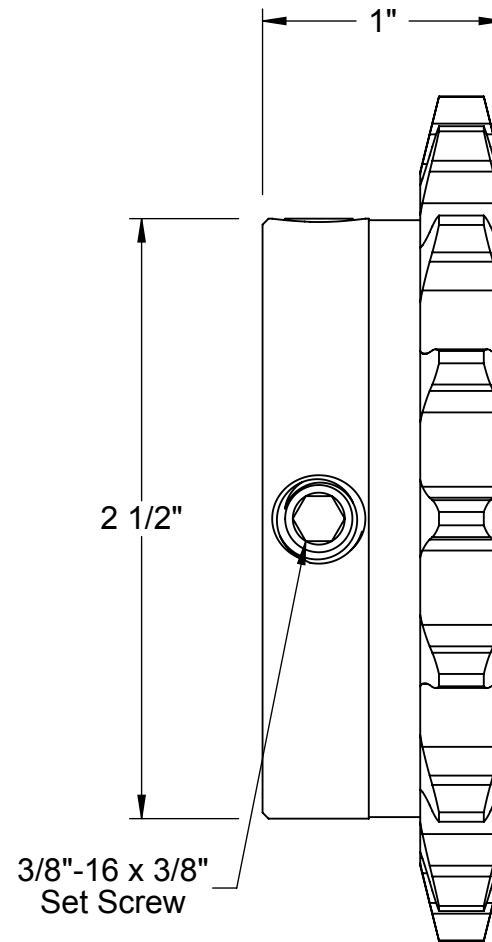
<http://www.mcmaster.com>
© 2014 McMaster-Carr Supply Company

Finished-Bore Sprocket for
ANSI #50 Roller Chain

Information in this drawing is provided for reference only.



Number of Teeth: 16



McMASTER-CARR CAD

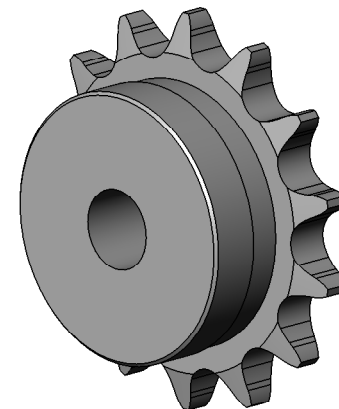
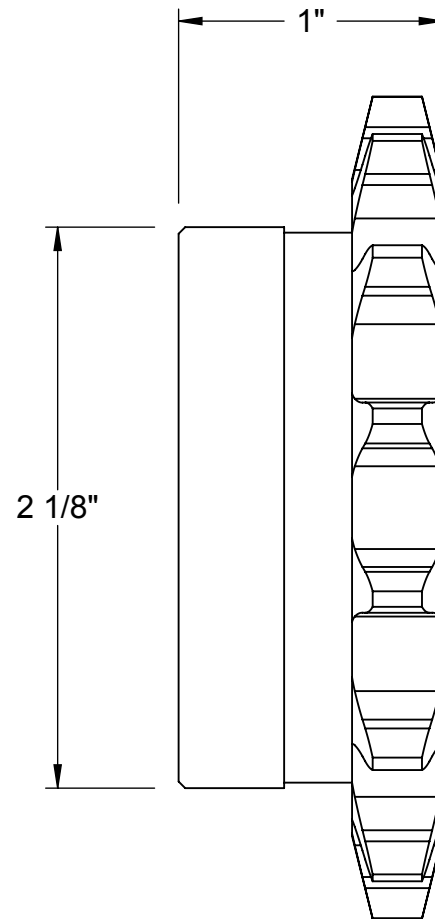
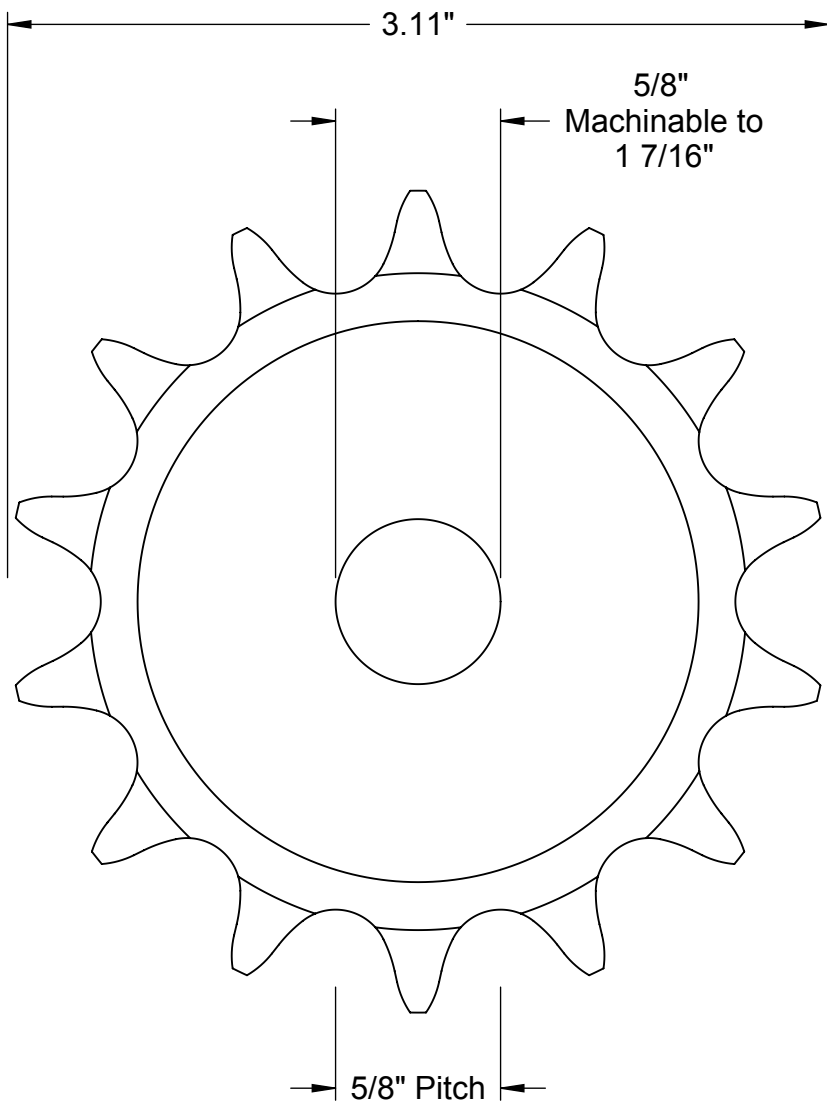
PART
NUMBER

6280K255

<http://www.mcmaster.com>
© 2014 McMaster-Carr Supply Company

Finished-Bore Sprocket for
ANSI #50 Roller Chain

Information in this drawing is provided for reference only.



Number of Teeth: 14

McMASTER-CARR CAD

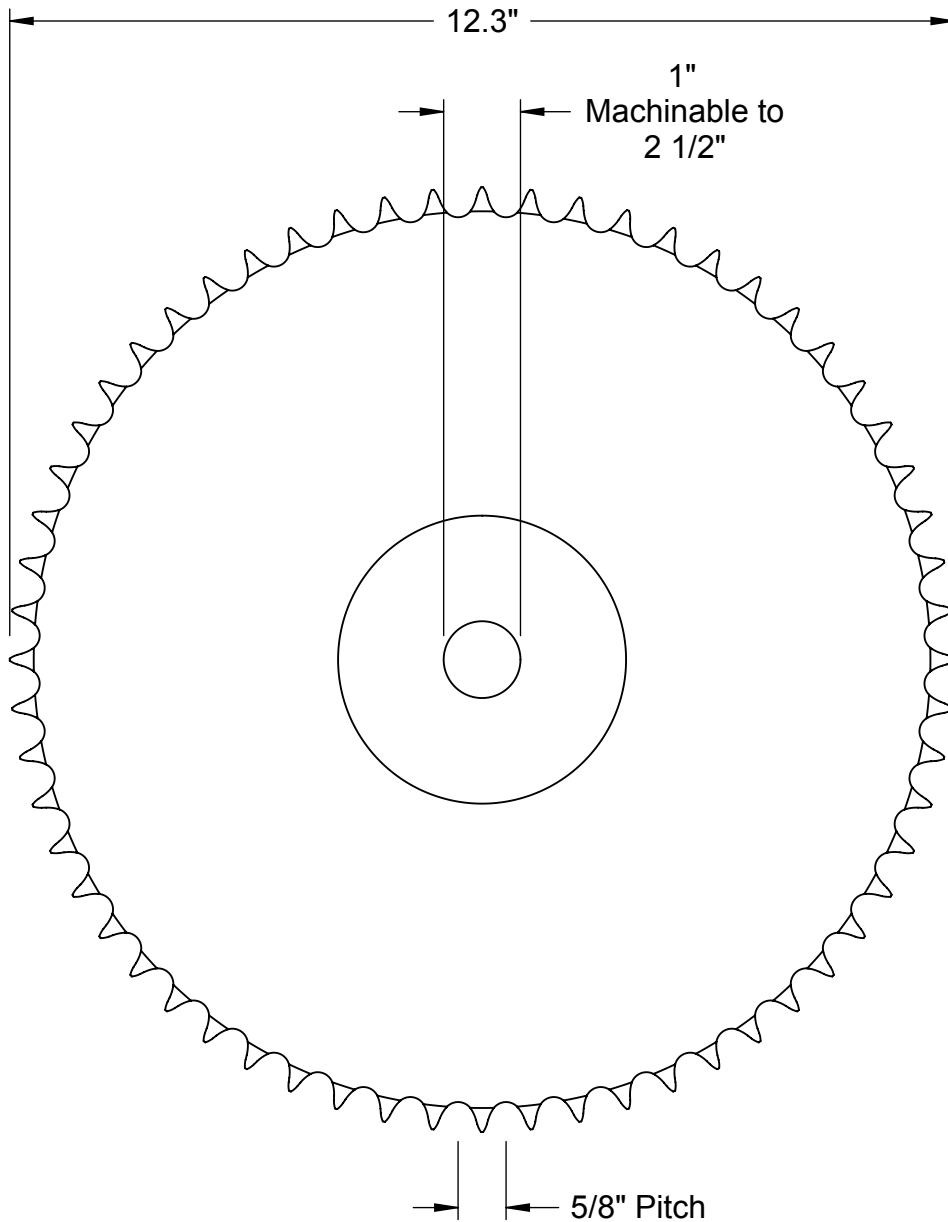
PART NUMBER

6793K168

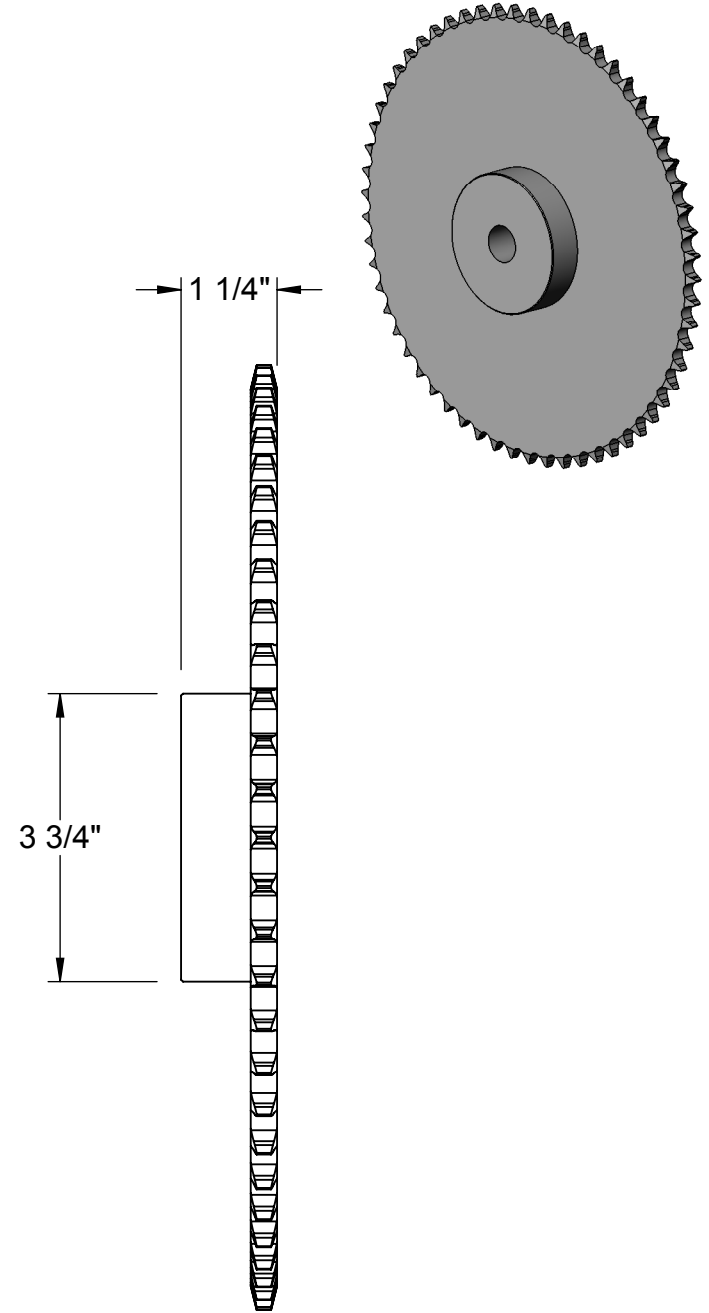
<http://www.mcmaster.com>
© 2014 McMaster-Carr Supply Company

Machinable-Bore Sprocket for
ANSI #50 Roller Chain

Information in this drawing is provided for reference only.



Number of Teeth: 60



McMASTER-CARR CAD

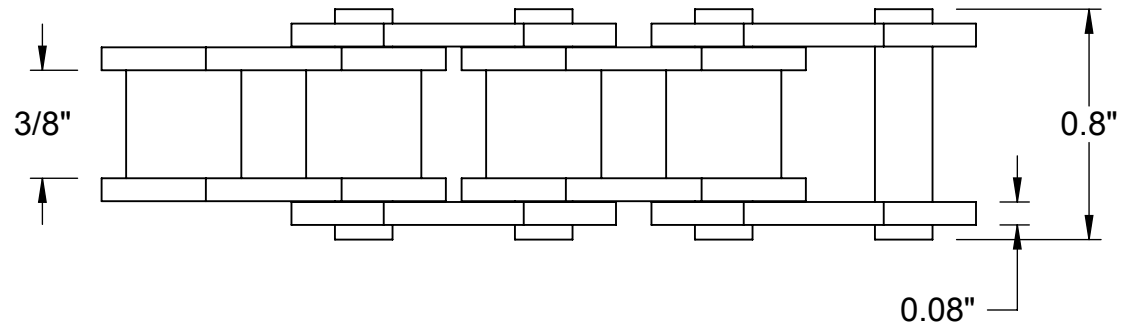
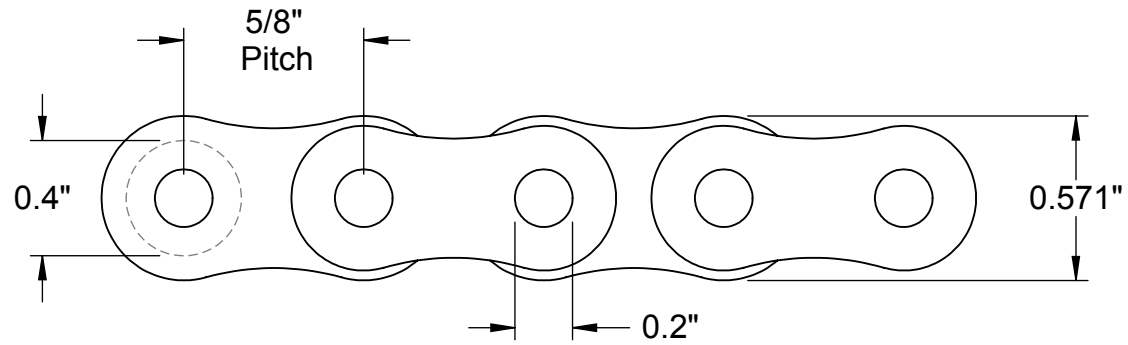
PART
NUMBER

6793K186

<http://www.mcmaster.com>
© 2014 McMaster-Carr Supply Company

Machinable-Bore Sprocket for
ANSI #50 Roller Chain

Information in this drawing is provided for reference only.



8 ft. Length

McMASTER-CARR CAD

PART
NUMBER

6261K238

<http://www.mcmaster.com>
© 2014 McMaster-Carr Supply Company

ANSI No. 50
Roller Chain

Information in this drawing is provided for reference only.