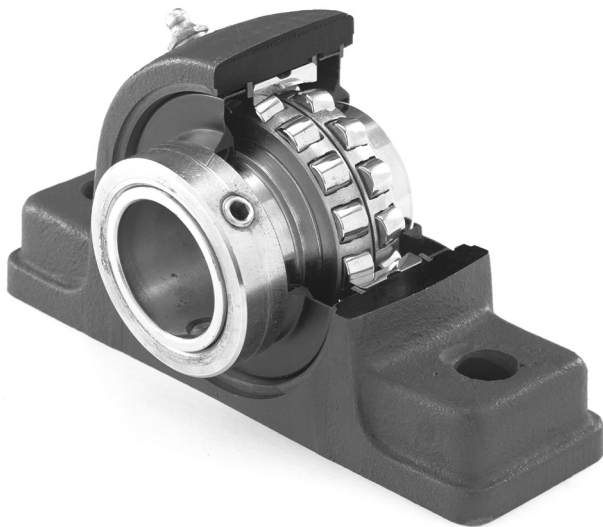


Jones Bearing Company is a manufacturing and marketing company with plants based in the USA. *Jones* is a part of a group of companies that manufactures and sells mechanical power transmission components and conveyor systems.

Jones has extensive engineering, manufacturing and marketing expertise in the field of mechanical power transmission and conveying equipment. In addition to roller bearing pillow blocks, *Jones* manufactures flange blocks, take ups, elevator boot bearing assemblies, pulley shaft and conveyor shaft assemblies. The past experience gained as a total manufacturer for the power transmission and conveying industries is essential for the development and application of a premier product line for general industry.

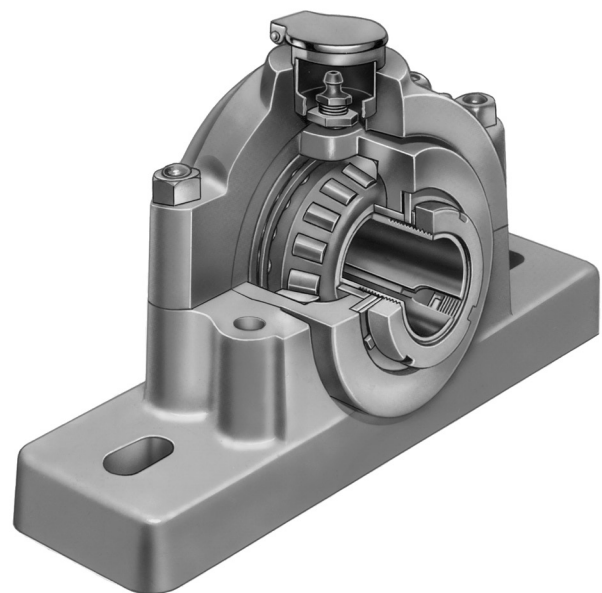
Jones **2000 Series** **Pillow Blocks**



- High Quality USA Made Spherical Roller Bearings
- Internal Misalignment
- Triple Labyrinth Seal
- Collar Mounted
- Interchanges with Most Major Brands

Jones **PB1000 Extra Heavy** **Duty Pillow Blocks**

- Heaviest Production Pillow Block
- Dual Tapered Roller Bearings
- All Steel High Temperature Seals
- Adapter Sleeve Mounted
- Highest Load Ratings Available

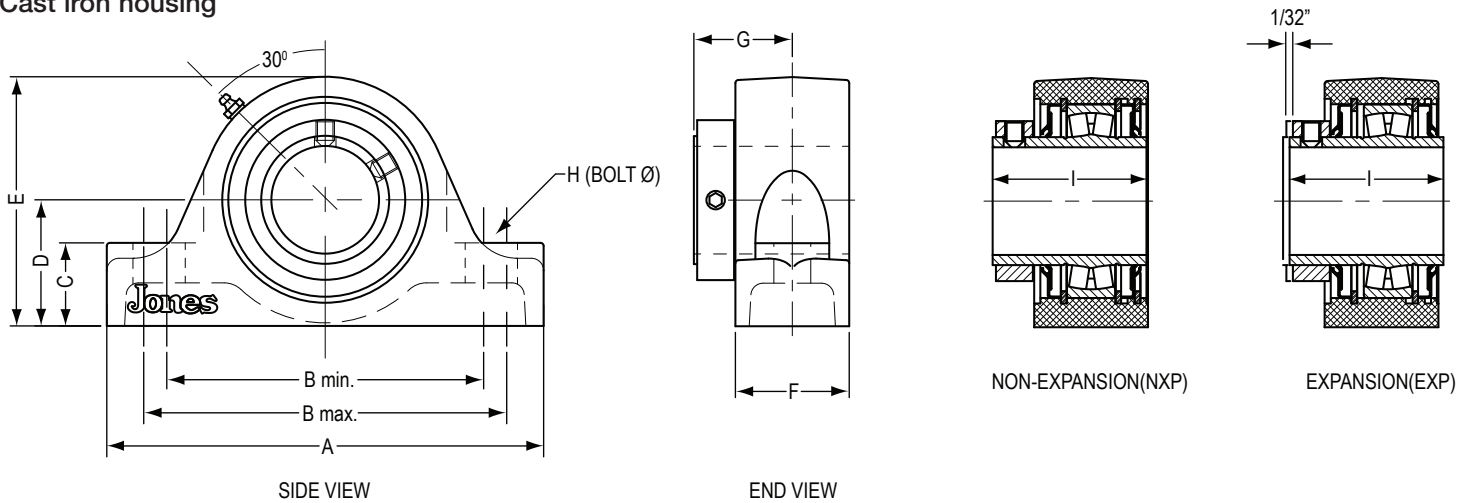


Pillow Blocks (2-Bolt)



JA-2000

- Fully self-aligning
- Fixed and expansion units
- Cast iron housing



SHAFT DIA.	ASSEMBLY DESIGNATION	TOTAL WEIGHT LBS.	A	B		C	D	E	F	G	H bolt Ø	I
				MIN	MAX							
17/16	JA2107	6.5	67/8	411/16	55/16	13/16	17/8	37/8	21/8	13/4	1/2	23/4
11/2	JA2108	6.5		411/16	55/16	13/16	17/8	37/8	21/8	13/4	1/2	23/4
111/16	JA2111	8.5	73/8	53/16	513/16	15/16	21/8	41/4	21/8	17/8	1/2	27/8
13/4	JA2112	8.0		53/16	513/16	15/16	21/8	41/4	21/8	17/8	1/2	27/8
115/16	JA2115	10.5	83/8	515/16	69/16	13/8	21/4	45/8	23/8	17/8	5/8	27/8
2	JA2200	10.0		515/16	69/16	13/8	21/4	45/8	23/8	17/8	5/8	27/8
23/16	JA2203	12.0	87/8	67/16	71/16	15/8	21/2	5	23/8	2	5/8	31/8
27/16	JA2207	18.0	91/4	613/16	77/16	13/4	23/4	511/16	25/8	21/8	5/8	33/8
21/2	JA2208	17.0		613/16	77/16	13/4	23/4	511/16	25/8	21/8	5/8	33/8
211/16	JA2211	24.0	101/2	713/16	87/16	21/4	31/4	67/16	25/8	23/8	3/4	35/8
23/4	JA2212	24.0										
215/16	JA2215	22.0										
3	JA2300	22.0										
37/16	JA2307	34.0	13	91/4	103/4	21/4	33/4	71/2	3	25/8	7/8	41/32
31/2	JA2308	33.8										
311/16	JA2311	49.8	141/4	10	113/4	21/2	41/8	87/16	33/8	3	1	419/32
315/16	JA2315	48.0										
4	JA2400	48.0										

NOTE: For expansion unit specify EXP.
 Steel Housings - see page 3.
 All units come as standard with triple guard seal.

Jones Bearing Company

P.O. Box 274 Highway 72 East • Pelham, Alabama 35124 • USA

Phone: 205-663-3002 • Fax: 205-664-3351



AMI Bearings, Inc.

570 North Wheeling Road

Mount Prospect, IL 60056

Phone: 800.882.8642 or 847.759.0620

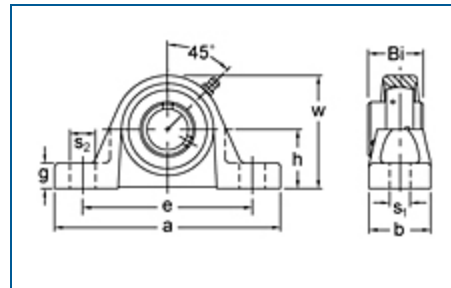
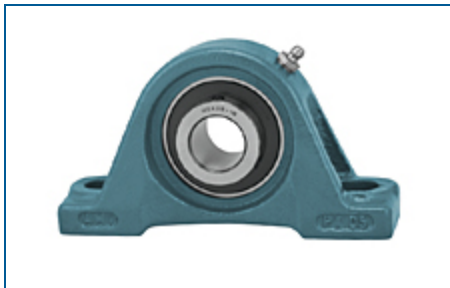
Fax: 847.759.0630

Email: amiorders@amibearings.com

Website: www.amibearings.com

Item # UCPX08-24, Set Screw Locking Pillow Block Unit, UCPX00 Series

- Insert
 - Set Screw Locking
 - Medium Duty
 - Wide Inner Ring
 - AISI 52100 Steel
- Housing
 - Pillow Block
 - Cast Iron



[Specifications](#) | [Dimensions](#)

Specifications

Shaft Diameter	1-1/2 in
Bolt Size	5/8 in
Bearing	UCX08-24
Housing	PX08

Lubrication Fitting Tap	1/8-27 NPT
-------------------------	------------

Weight	7.71 lb
--------	---------

Dimensions

h	2-5/16 in
---	-----------

a	8-3/4 in
---	----------

e-Min	5-1/2 in
-------	----------

e-Max	6-3/4 in
-------	----------

b	2-5/8 in
---	----------

s1	25/32 in
----	----------

s2	1-1/4 in
----	----------

g	1-1/32 in
---	-----------

w	4-17/32 in
---	------------

Bi	1.937 in
----	----------

Mounted Bearings

ReliaMark® provides a large selection of mounted ball bearings designed for a variety of general-duty applications. Distributed exclusively by Kaman, ReliaMark mounted units are available in standard shaft sizes ranging from ½" to 3" and metric sizes from 15mm to 75mm. Housing styles include Pillow Block, 2- and 4-Bolt Flanges, 3-Bolt Flanged Brackets, Tapped Base and Take-Up Units. Most are available in both set-screw and eccentric locking collar mounts.

Exceptional value in all common mounted ball bearing styles and sizes

ReliaMark bearings are manufactured to meet common industry standards for mounted ball bearings. All units are assembled with careful attention to bearing-to-housing fit. This allows for the insert to properly align within the housing when the unit is tightened to the shaft, providing for smooth operation and optimized bearing life.

All ReliaMark bearings have, as standard, an internal metal-backed BUNA lip seal and an external flinger to protect the seal in tough operating conditions. ReliaMark mounted

www.reliamark.com

bearings are also available with Triple Lip Seals for use in harsh environments. The bearing insert also utilizes steel ball retainers that will help the bearing handle difficult operating conditions better than other retainer materials. This added protection, along with regular grease relubrication, extends the life and reliability of the bearing. The quality and reliability of ReliaMark bearings offer a high-value MRO alternative for general-duty applications.

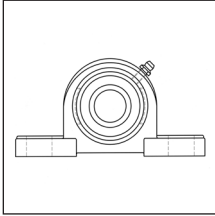
ReliaMark standard-duty mounted bearings are a cost-effective choice for many applications. Please see the charts on the reverse side for a quick overview of available styles and sizes. Full product specifications, warranty and mounting instructions are available online at www.reliamark.com with links to the Kaman online ordering system for direct purchase.

For help cross-referencing replacement parts, or for assistance with specifying mounted bearings for industry applications, contact your local Kaman sales representative.

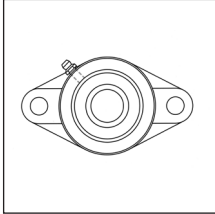
Your Local ReliaMark Distributor:



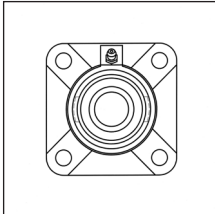
Cut costs,
not corners.



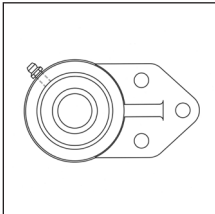
Pillow Block (UCP, RAK)



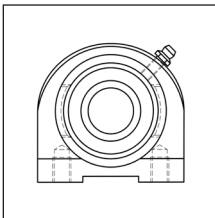
2-Bolt Flange (UCFL, UCFT, FJT)



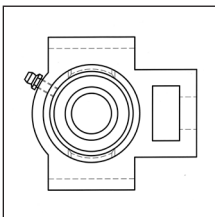
4-Bolt Flange (UCF, FWS)



3-Bolt Flanged Bracket (FB)



Tapered Base (TB)



Take-Up Unit (UCT, SKL, WS)

	Pillow Block		2-Bolt Flange		4-Bolt Flange		3-Bolt Flanged Bracket		Tapered Base		Take-Up Unit	
Shaft Size	Set Screw (UCP)	Locking Collar (RAK)	Set Screw (UCF, UCFLT)	Locking Collar (FJT)	Set Screw (UCF)	Locking Collar (FWS)	Set Screw (FB)	Locking Collar (FB)	Set Screw (TB)	Locking Collar (TB)	Set Screw (UCT, WS)	Locking Collar (SKL)
1/2"	●		●		●				●			
5/8"			●		●				●			
11/16"			●	●	●							
3/4"	●	●	●	●	●	●	●	●	●	●	●	●
7/8"	●	●	●	●	●	●	●	●	●	●	●	●
15/16"	●	●	●	●	●	●	●	●	●	●	●	●
1"	●	●	●	●	●	●	●	●	●	●	●	●
1-1/8"	●	●	●	●	●	●	●	●	●	●	●	●
1-3/16"	●	●	●	●	●	●	●	●	●	●	●	●
1-1/4"	●	●	●	●	●	●	●	●	●	●	●	●
1-3/8"	●	●	●	●	●	●	●	●	●	●	●	●
1-7/16"	●	●	●	●	●	●	●	●	●	●	●	●
1-1/2"	●	●	●	●	●	●	●	●	●	●	●	●
1-5/8"	●	●	●	●	●	●	●	●	●	●	●	●
1-11/16"	●	●	●	●	●	●	●	●	●	●	●	●
1-3/4"	●	●	●	●	●	●	●	●	●	●	●	●
1-7/8"	●	●	●	●	●	●	●	●	●	●	●	●
1-15/16"	●	●	●	●	●	●	●	●	●	●	●	●
2"	●	●	●	●	●	●	●	●	●	●	●	●
2-1/8"	●	●	●	●	●	●	●	●	●	●	●	●
2-3/16"	●	●	●	●	●	●	●	●	●	●	●	●
2-1/4"	●	●	●	●	●	●	●	●	●	●	●	●
2-3/8"	●	●	●	●	●	●	●	●	●	●	●	●
2-7/16"	●	●	●	●	●	●	●	●	●	●	●	●
2-1/2"	●	●	●	●	●	●	●	●	●	●	●	●
2-11/16"	●	●	●	●	●	●	●	●	●	●	●	●
2-3/4"	●	●	●	●	●	●	●	●	●	●	●	●
2-7/8"	●	●	●	●	●	●	●	●	●	●	●	●
2-15/16"	●	●	●	●	●	●	●	●	●	●	●	●
3"	●	●	●	●	●	●	●	●	●	●	●	●

Metric Shaft Size	Set Screw	Locking Collar	Set Screw	Locking Collar	Set Screw	Locking Collar	Set Screw	Locking Collar	Set Screw	Locking Collar	Set Screw	Locking Collar
12mm	●		●		●				●			
15mm	●				●				●			
17mm	●			●	●				●			
20mm	●	●	●	●	●	●	●	●	●	●	●	●
25mm	●	●	●	●	●	●	●	●	●	●	●	●
30mm	●	●	●	●	●	●	●	●	●	●	●	●
35mm	●	●	●	●	●	●	●	●	●	●	●	●
40mm	●	●	●	●	●	●	●	●	●	●	●	●
45mm	●	●	●	●	●	●	●	●	●	●	●	●
50mm	●	●	●	●	●	●	●	●	●	●	●	●
55mm	●	●	●	●	●	●	●	●	●	●	●	●
60mm	●	●	●	●	●	●	●	●	●	●	●	●
65mm	●	●	●	●	●	●	●	●	●	●	●	●
70mm	●	●	●	●	●	●	●	●	●	●	●	●
75mm	●	●	●	●	●	●	●	●	●	●	●	●

● = L3 (Triple Lip Seals Available)
 Visit www.reliamark.com for detailed technical specifications.

Bearings
 Cast iron housings
 52100 steel inserts
 Metric and inch bores

Distributed Exclusively By

KAMAN

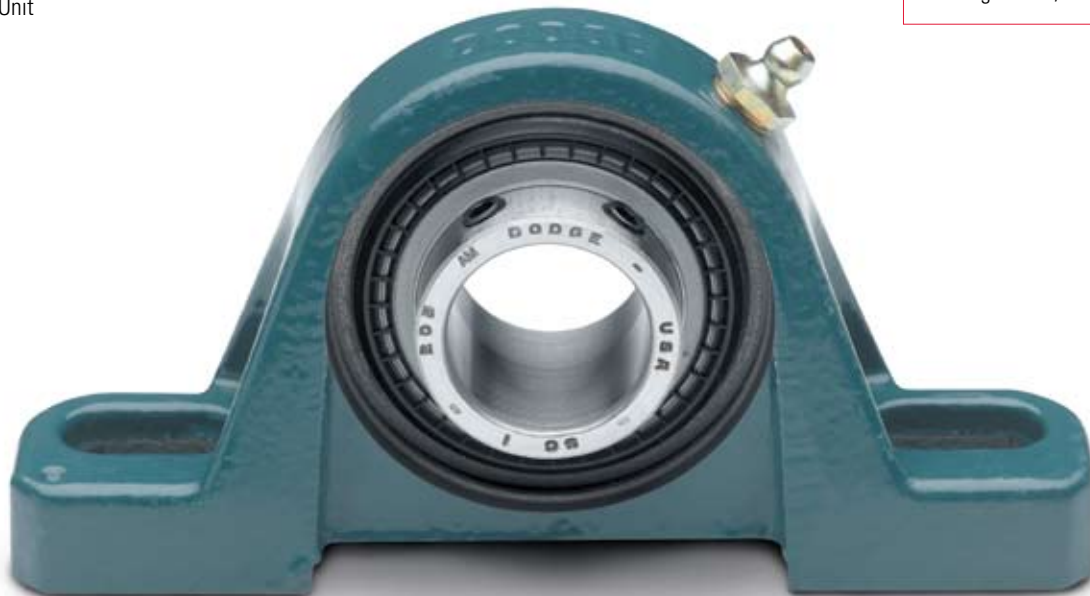
Automation
 Fluid Power
 Industrial Technologies

SETScrew MOUNTED BALL BEARINGS

For over 65 years, DODGE has provided innovative solutions for the industry's toughest mounted bearing applications. This experience led to the design of the most advanced mounted ball bearing product line in the industry. DODGE ball bearings are built in our state-of-the-art facility in Rogersville, Tennessee using the latest manufacturing technologies to produce the highest quality product available on the market today.

VSC	Value Line
SC	Normal Duty
SCM	Medium Duty
SCED	Extreme Duty
SCMED	Extreme Medium Duty

- 65° setscrew locking system
- Precision-hardened and honed inner and outer rings
- Grade 10 balls
- Wide inner ring design
- Available sizes 1/2" - 3-1/2" (17mm - 70mm)
- Cooler operation for longer grease life
- Housing styles:
 - Pillow Block
 - Tapped Base
 - Flange - 2-Bolt, 3-Bolt, and 4-Bolt
 - Piloted Flange
 - Flange Bracket
 - Screw Conveyor Hanger Bearing
 - Hanger Bearing
 - Cylindrical Unit
 - Take-Up



SC/SCM

VALUE ADDED FEATURES

SUPERIOR LOCKING FORCE

DODGE uses 65° spacing for setscrews. This unique design offers an optimum balance between locking force and inner ring stress.



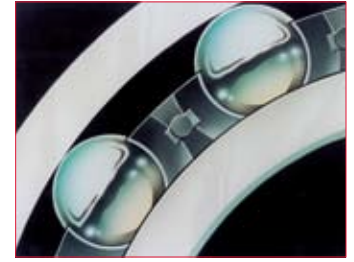
PATENTED DUALGUARD SEAL

DODGE SC/SCM products use the patented DualGuard sealing system that offers maximum protection in tough environments. The DualGuard seal consists of two patented features that are unique to DODGE bearings.

- Land-riding single lip seal
 - Made of nitrile rubber
 - Provides positive contact with the inner ring
 - Assures uniform lip contact to keep contaminants out and seal in lubricant
 - Mechanically retained seal adds strength and allows grease to purge
- Rubberized flinger
 - Industry's first and only patented design
 - Molded rubber provides additional protection against contaminants entering the bearing
 - Baffle design of the rubber on the external surface of the flinger enhances the removal of liquid during rotation
 - Rubber baffles create a turbulent airflow around the seal to help protect against airborne contaminants
 - Grease chambers on the internal surface prevent lubricants from exiting the bearing
 - Superior design increases service life in dirty environments thus leading to extended uptime

STRONGER, MORE FLEXIBLE CAGE

The SC/SCM uses a ball cage that is made of heat stabilized nylon with fiber-glass reinforcement for added strength. The nylon material provides a natural lubricity for longer life. Fiberglass reinforcement allows higher operating temperatures than plain nylon, is more resistant to fatigue than metallic cages, and prevents the cage from retaining moisture in wet environments. Short fiberglass allows greater flexibility than steel or normal fiberglass, especially under misalignment. That means longer life in applications where some degree of misalignment is unavoidable.



SIMPLIFIED ANTI-ROTATION DEVICE

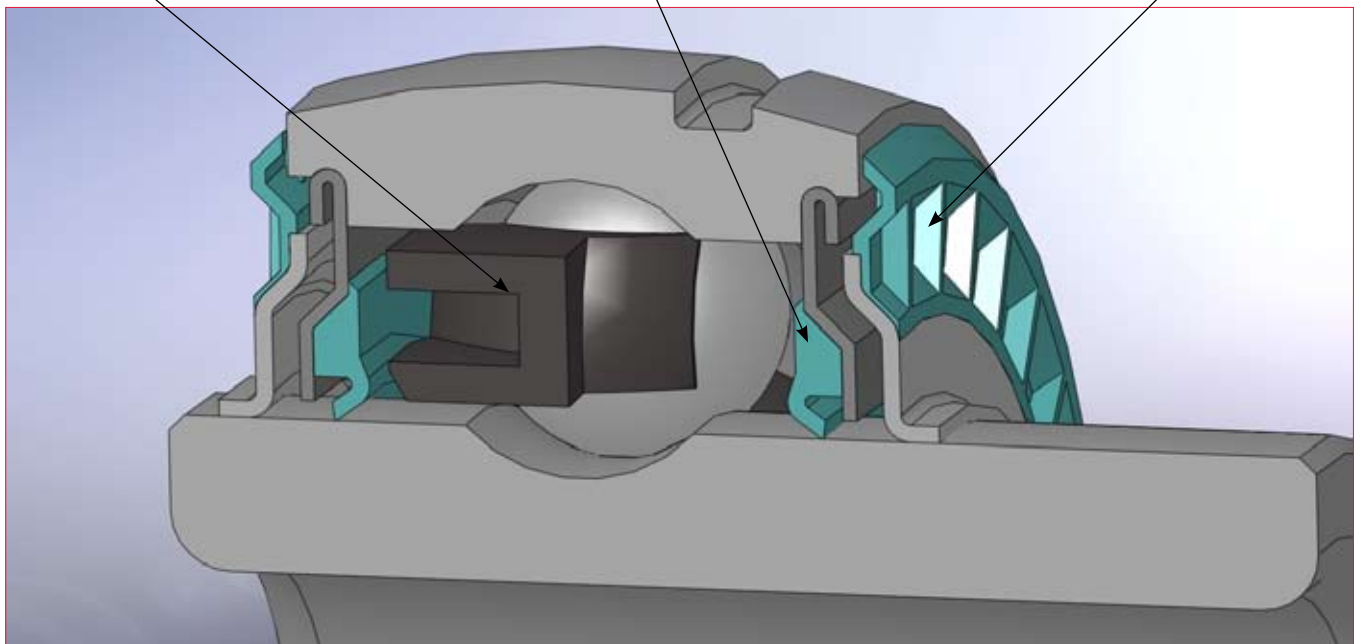
An anti-rotation pin prevents rotation of the outer race within the housing. Simple and effective, it makes system inserts easier to replace. There is no need to remove and replace grease fittings, location pins or other devices.



Fiberglass Reinforced Nylon Cage

Mechanically Retained Lip Seal

Patented Rubberized Flinger



SCED/SCMED—EXTREME DUTY

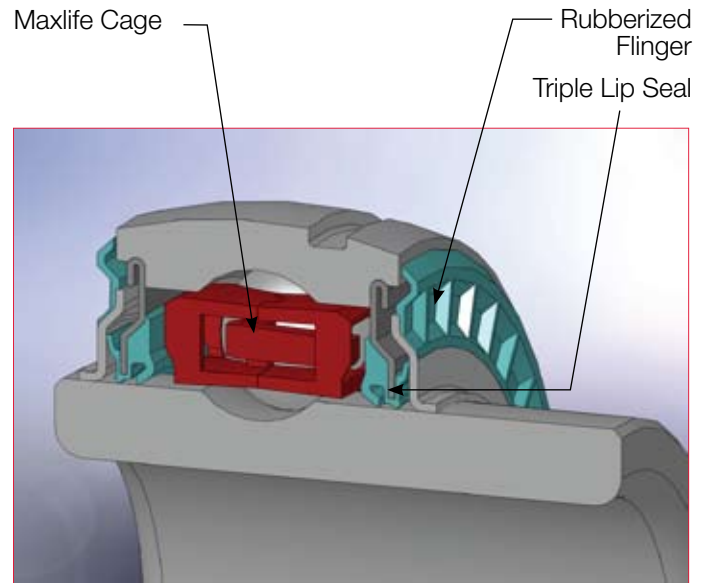
REDUCED MAINTENANCE

The DODGE SC/SCMED Extreme Duty ball bearing offers extended life in the toughest industrial applications. Incorporating patented DODGE-only features such as the QuadGuard sealing system and the Maxlife ball cage, the DODGE SCED/SCMED bearing outperforms the competition in demanding environments where increasing equipment uptime is critical to success. Extreme conditions require highly-engineered products that will last. The DODGE Extreme Duty ball bearing is up to the challenge.

PATENTED QUADGUARD SEAL

The SCED/SCMED uses our patented QuadGuard sealing system that offers superior protection in tough environments where there is significant risk of contamination. Industries such as aggregates, cement, paper, wood products and metals require a sealing system that will extend the life of the bearing in harsh conditions. There are two major components to the QuadGuard design.

- Triple-lip seal
 - Patented design
 - Mechanically retained seal with two contact points on the inner ring and one contact point that rides against flinger surface
 - Three points of contact guard against contamination and keep in lubricants
 - Maximizes sealing without a significant speed rating reduction compared to a single lip design
- Rubberized flinger
 - Patented design (first in the industry)
 - Molded rubber provides additional protection from contaminants entering the bearing
 - Baffle design of the rubber on the external surface of the flinger enhances the removal of liquid as it rotates
 - Grease chambers on the internal surface prevent lubricants from exiting the bearing
 - Superior design increases service life in dirty environments, thus leading to extended uptime



SCED/SCMED PATENTED MAXLIFE BALL CAGE

LESS MAINTENANCE REQUIRED

The SCED/SCMED incorporates an innovative cage design that is unique to DODGE. The Maxlife cage is the product of extensive research and development in retainer technology and industry leading engineering.

- Two-piece design that creates a grease compartment around each of the rolling elements
- Compartments allow balls to be constantly in contact with grease, insuring that an oil film will always exist to prevent wear and minimize friction and heat
- Relative motion between the components and the grease is reduced, resulting in lower operating temperatures and extended life
- Compartmental construction of the cage helps hold in the grease and prevents it from being washed out in extremely wet or dirty conditions
- Exclusive design extends life with less frequency of re-lubrication than standard designs



SYNTHETIC GREASE STANDARD

The SCED/SCMED utilizes the latest in synthetic grease technology to provide lower operating temperatures, extended grease life, and maximum time between re-lubrication. The SC Extreme Duty ball bearing from DODGE offers the ultimate in engineering and innovation to provide a product that requires less maintenance and will last longer in demanding environments.



3 YEAR WARRANTY

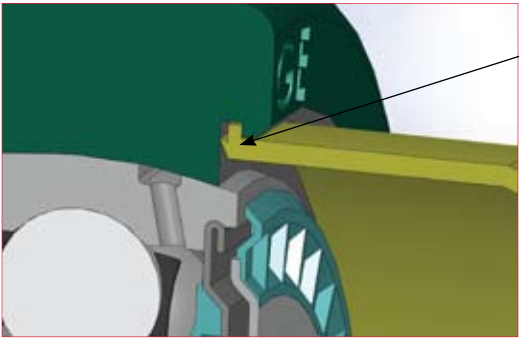
DODGE SNAP-ON END COVERS

ENHANCED SEALING / SAFER WORK ENVIRONMENT

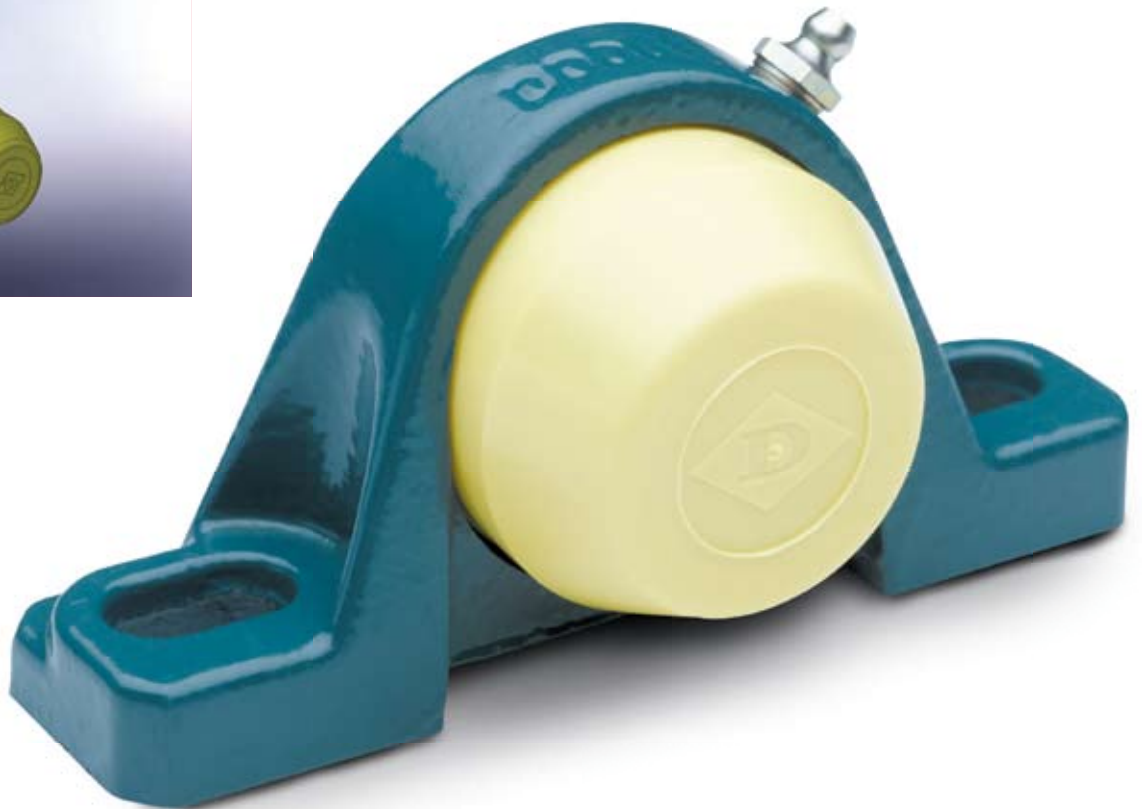
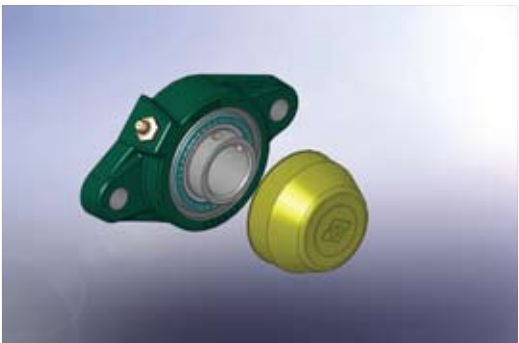
HOUSING DESIGNED FOR SNAP-ON END COVER

SC/SCM and SCED/SCMED bearings contain a machined groove in the housing to accommodate a snap-on style polymer end cover. The end cover provides additional protection from the environment and creates a safer working environment for employees maintaining equipment. The snap-on style end cover incorporates an additional lip on the mounting surface for a more rigid fit within the housing and enhanced sealing. The design is more durable than a bolt-on style that uses the grease fitting to secure the cover in place and can be easily knocked off the bearing housings. Closed and open end covers are available.

- Available as a standard feature for SC/SCM and SCED/SCMED products
- Machined groove in housing accommodates snap-on style polymer end cover
- Extended lip on the outer diameter of end cover provides a secure fit and positive sealing
- Provides additional layer of protection in harsh environments
- Creates a safer work environment for employees
- OSHA approved yellow
- Closed and open end covers available



Extended lip provides a secure fit and positive sealing

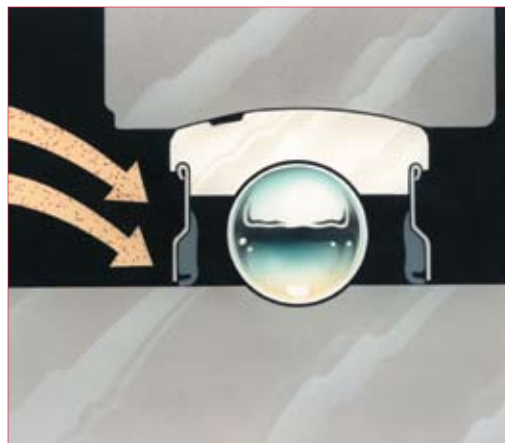


VSC

VALUE LINE OF BALL BEARINGS

Not every application demands features for extended life. For less demanding applications, the DODGE VSC Ball Bearing is the perfect choice. The VSC maintains high quality level expectations by offering the following standard features.

- Fiberglass reinforced nylon cage
- 65° setscrew angle
- Grade 10 balls
- Mechanically retained single lip seal
- American made in Rogersville, Tennessee



DODGE VSC mounted ball bearings use the field proven PROGUARD land-riding contact seal with steel shield protection. This highly effective positive seal design assures uniform lip contact with the inner ring to seal out contaminants and seal in lubricants.